



Catalogue

Solid Clay Bricks
(Extruded Exposed)

Stay Creative
Stay Sustainable
with Terracotta



Exposed Solid clay bricks, also known as exposed wirecut bricks, facing bricks and are manufactured using modern method. Relatively low moisture clay is extruded through a die to form a column. These are completely exposed extruded and solid by nature having very high compressive strength. No plastering is required and are used for beautification. We are manufacturing clay exposed extruded bricks for Flemish Bonding and RAT Trap Bonding in different sizes. We can also take any customized extruded bricks subjected to minimum order quantity.

Features

- Eco Friendly
- Higher Compressive Strength
- Lower Water Absorption

Benefits

- Passive Fire Protection
- Cryogenic Insulation
- Long Life & Cost Saving

Advantages

- Acoustic Insulation
- Hot Surface Insulation
- Combination Solution Saving
- Extra Protection & Natural Beauty

Technical Information

- * **Compressive Strength** - 20+ N/mm² As per IS 1077-1992
IS:3495 (Part 1-4) 1992 (Reaffirmed 2016)
IS:1077 - 1992 (Reaffirmed 2016)
- * **Water Absorption** - 14.25% - 14.5% as per IS



Model Name - Solid 12x3 Facing
Model No - SF 01
Model Category - Flemish Bonding
Dimension - 12" x 6" x 3"
Appearance - Solid Rectangular
Weight: 6.80 KG
Qty per Sft: 4.00 Nos
Colour - Copper / Orange Red



Model Name - Solid 12x3 Facing
Model No - SF 02
Model Category - Flemish Bonding
Dimension - 12" x 4" x 3"
Appearance - Solid Rectangular
Weight: 4.10 KG
Qty per Sft: 4.00 Nos
Colour - Copper / Orange Red



Model Name - Solid 12x1.5 Facing
Model No - SF 03
Model Category - Flemish Bonding
Dimension - 12" x 4" x 1.5"
Appearance - Solid Rectangular
Weight: 2.10 KG
Qty per Sft: 8.00 Nos
Colour - Copper / Orange Red



Model Name - Solid 12x2 Facing
Model No - SF 04
Model Category - Flemish Bonding
Dimension - 12" x 4" x 2"
Apperance - Solid Rectangular
Weight: 2.80 KG
Qty per Sft: 6.00 Nos
Colour - Copper / Orange Red



Model Name - Solid 12x3 Facing
Model No - SF 05
Model Category - Flemish Bonding
Dimension - 12" x 3" x 2"
Apperance - Solid Rectangular
Weight: 2.10 KG
Qty per Sft: 4.00 Nos
Colour - Copper / Orange Red



Model Name - Solid 9x3 Facing
Model No - SF 06
Model Category - Flemish Bonding
Dimension - 9" x 6" x 3"
Appearance - Solid Rectangular
Weight: 5.50 KG
Qty per Sft: 5.33 Nos
Colour - Copper / Orange Red



Model Name - Solid 9x3 Facing

Model No - SF 07

Model Category - Flemish Bonding

Dimension - 9" x 4" x 3"

Appearance - Solid Rectangular

Weight: 3.20 KG

Qty per Sft: 5.33 Nos

Colour - Copper / Orange Red



Model Name - Solid 9x2 Facing

Model No - SF 08

Model Category - Flemish Bonding

Dimension - 9" x 4" x 2"

Appearance - Solid Rectangular

Weight: 2.20 KG

Qty per Sft: 8.00 Nos

Colour - Copper / Orange Red



Model Name - Solid 9x1.5 Facing

Model No - SF 09

Model Category - Flemish Bonding

Dimension - 9" x 4" x 1.5"

Appearance - Solid Rectangular

Weight: 2.10 KG

Qty per Sft: 13.00 Nos

Colour - Copper / Orange Red



Model Name - Solid 9x1.25 Facing

Model No - SF 10

Model Category - Flemish Bonding

Dimension - 9" x 4" x 1.25"

Appearance - Solid Rectangular

Weight: 1.30 KG

Qty per Sft: 9.60 Nos

Colour - Copper / Orange Red



Model Name - Solid 9x2 Facing

Model No - SF 11

Model Category - Flemish Bonding

Dimension - 9" x 3" x 2"

Appearance - Solid Rectangular

Weight: 1.60 KG

Qty per Sft: 8.00 Nos

Colour - Copper / Orange Red



Model Name - Solid 9x1.25 Facing

Model No - SF 12

Model Category - Flemish Bonding

Dimension - 9" x 3" x 1.25"

Appearance - Solid Rectangular

Weight: 0.90 KG

Qty per Sft: 12.80 Nos

Colour - Copper / Orange Red



Model Name - Solid 9x1.25 Facing

Model No - SF 13

Model Category - Flemish Bonding

Dimension - 9" x 2" x 1.25"

Appearance - Solid Rectangular

Weight: 0.98 KG

Qty per Sft: 12.80 Nos

Colour - Copper / Orange Red



Model Name - Solid 9x1.25 Facing

Model No - SF 14

Model Category - Flemish Bonding

Dimension - 9" x 1.25" x 1.25"

Appearance - Solid Rectangular

Weight: 0.70 KG

Qty per Sft: 13.00 Nos

Colour - Copper / Orange Red



Model Name - RAT 12x4 Facing

Model No - SRT 15

Model Category - RAT Trap Bonding

Dimension - 12" x 1" x 4"

Appearance - Solid Rectangular

Weight: 1.40 KG

Qty per Sft: 3.00 Nos

Colour - Copper / Orange Red



Model Name - RAT 12x3 Facing

Model No - SRT 16

Model Category - RAT Trap Bonding

Dimension - 12" x 2" x 3"

Appearance - Solid Rectangular

Weight: 2.10 KG

Qty per Sft: 4.00 Nos

Colour - Copper / Orange Red



Model Name - RAT 9x6 Facing

Model No - SRT 17

Model Category - RAT Trap Bonding

Dimension - 9" x 3" x 6"

Appearance - Solid Rectangular

Weight: 5.50 KG

Qty per Sft: 2.67 Nos

Colour - Copper / Orange Red



Model Name - RAT 9x4 Facing

Model No - SRT 18

Model Category - RAT Trap Bonding

Dimension - 9" x 2" x 4"

Appearance - Solid Rectangular

Weight: 2.20 KG

Qty per Sft: 4.00 Nos

Colour - Copper / Orange Red



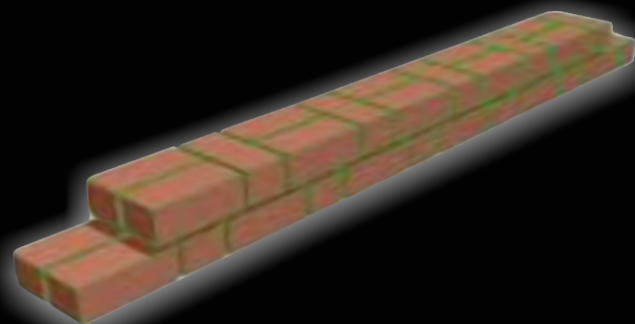
Model Name - RAT 9x4 Facing
Model No - SRT 19
Model Category - RAT Trap Bonding
Dimension - 9" x 3" x 4"
Apperance - Solid Rectangular
Weight: 3.30 KG
Qty per Sft: 4.00 Nos
Colour - Copper / Orange Red



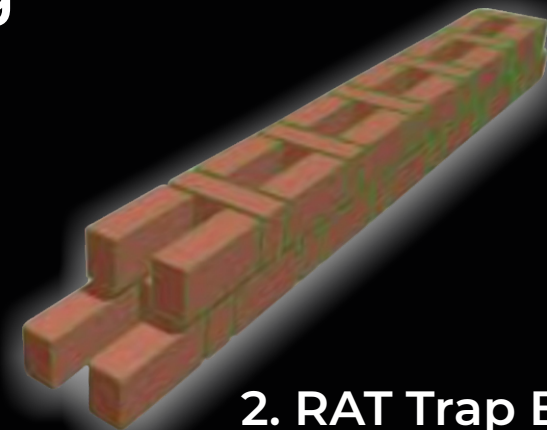
Model Name - RAT 9x3 Facing
Model No - SRT 20
Model Category - RAT Trap Bonding
Dimension - 9" x 2" x 3"
Appearance - Solid Rectangular
Weight: 1.50 KG
Qty per Sft: 5.33 Nos
Colour - Copper / Orange Red



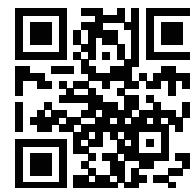
Types of Bonding



1. Flemish Bonding



2. RAT Trap Bonding



Contact Us:

-  www.durgamba.co.in
-  info@durgamba.co.in
-  +91 96060 17707
-  +91 95381 01456 | +91 95385 01236